

ANDERSON & SENN
COMMERCIAL REAL ESTATE

**FOR
LEASE**



620 California Blvd, Suite P

Property Description:

City: San Luis Obispo, CA

Size: 788 Square Feet

Price: \$2.75/Square Foot, NNN

Type: Dental or Medical Office

Notes: This suite is currently configured as open space but can be modified to reflect the attached floor plan, which can provide for up to four exam rooms.

DEREK SENN

805.543.1400
798 PALM ST, SLO, CA 93401
www.Anderson-Senn.com
DRE #001252131

ANDERSON & SENN

COMMERCIAL REAL ESTATE

620 CALIFORNIA SUITE #P

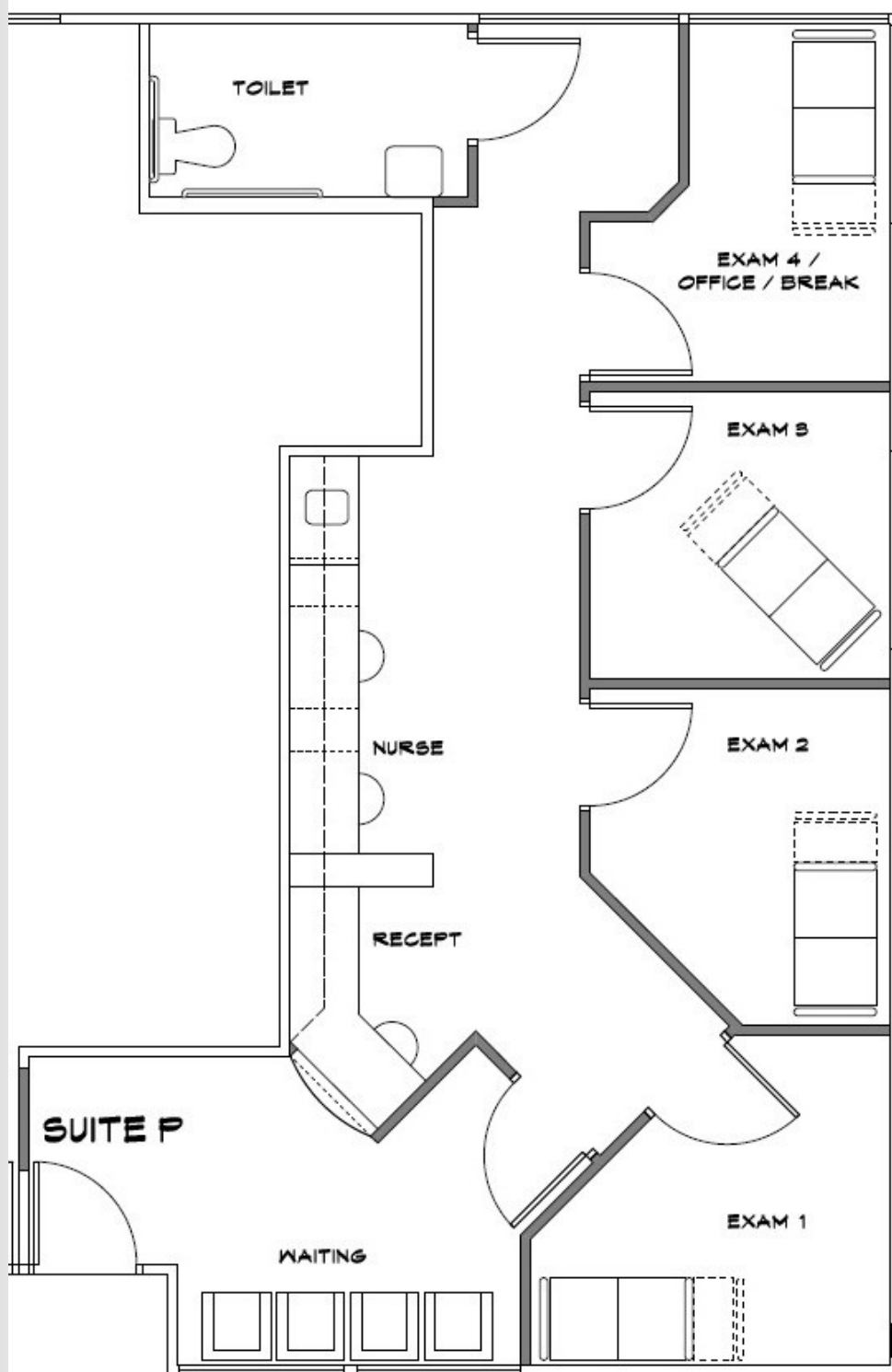


DEREK SENN

805.543.1400
798 PALM ST, SLO, CA 93401
www.Anderson-Senn.com
DRE #001252131



INFORMATION CONTAINED HEREIN HAS BEEN OBTAINED FROM SOURCES WE DEEM RELIABLE. WHILE WE HAVE NO REASON TO DOUBT ITS ACCURACY WE DO NOT GUARANTEE IT.



DEREK SENN

805.543.1400
798 PALM ST, SLO, CA 93401
www.Anderson-Senn.com
DRE #001252131

ANDERSON & SENN

COMMERCIAL REAL ESTATE

620 CALIFORNIA SUITE #P



DEREK SENN

805.543.1400
798 PALM ST, SLO, CA 93401
www.Anderson-Senn.com
DRE #001252131

