



## 3000 Broad Street, Suite 101

**Property Description:**

City: San Luis Obispo, CA

Size: 1,100 Square Feet

Price: \$1.70/Square Foot, NNN (\$0.35)

Type: Office/Warehouse

Notes: Approximately 300 square foot office with built-in desks, plus 800 square foot open area, tile floor, and good lighting. Ideal for small distributor, computer servicing, or other clean business.

**DEREK SENN**

805.543.1400  
798 PALM ST, SLO, CA 93401  
[www.Anderson-Senn.com](http://www.Anderson-Senn.com)  
DRE #001252131

# ANDERSON & SENN

COMMERCIAL REAL ESTATE

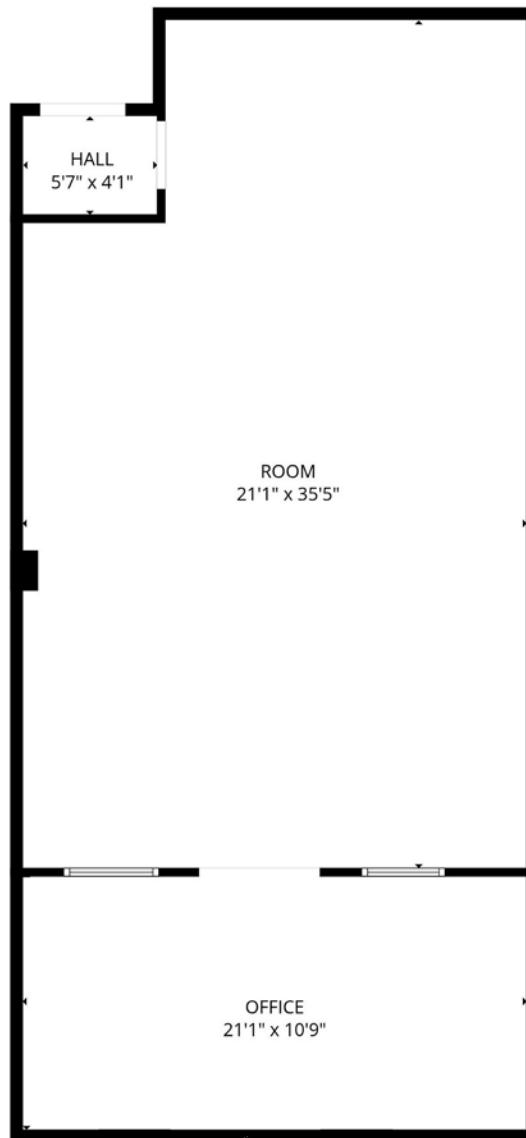
## 3000 BROAD #101



**DEREK SENN**

805.543.1400  
798 PALM ST, SLO, CA 93401  
[www.Anderson-Senn.com](http://www.Anderson-Senn.com)  
DRE #001252131

INFORMATION CONTAINED HEREIN HAS BEEN OBTAINED FROM SOURCES WE DEEM RELIABLE. WHILE WE HAVE NO REASON TO DOUBT ITS ACCURACY WE DO NOT GUARANTEE IT.



**DEREK SENN**

805.543.1400  
798 PALM ST, SLO, CA 93401  
[www.Anderson-Senn.com](http://www.Anderson-Senn.com)  
DRE #001252131

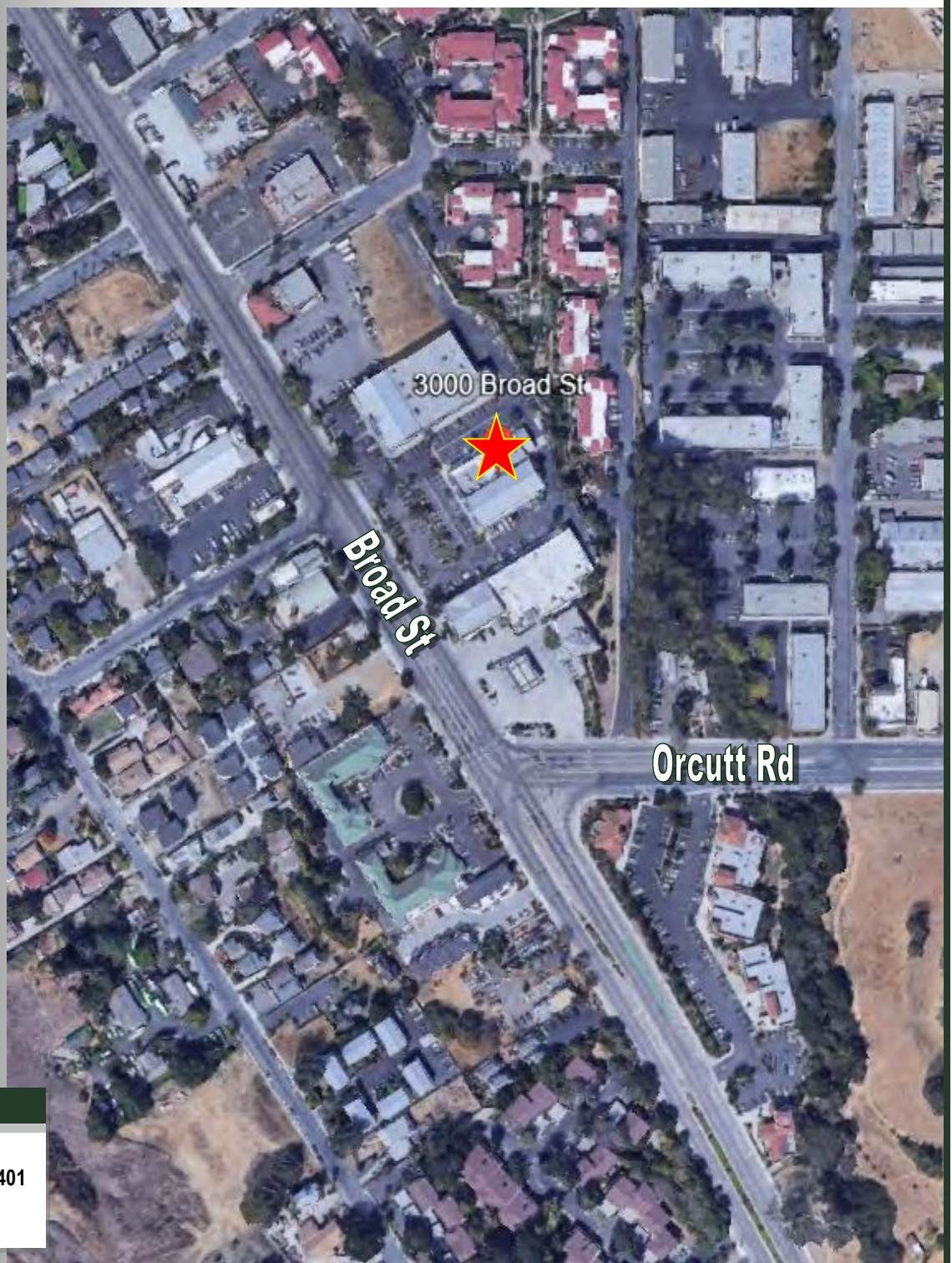
FLOOR PLAN CREATED BY CUBICASA APP. MEASUREMENTS DEEMED HIGHLY RELIABLE BUT NOT GUARANTEED.



# ANDERSON & SENN

COMMERCIAL REAL ESTATE

## 3000 BROAD #101



DEREK SENN

805.543.1400  
798 PALM ST, SLO, CA 93401  
[www.Anderson-Senn.com](http://www.Anderson-Senn.com)  
DRE #001252131

INFORMATION CONTAINED HEREIN HAS BEEN OBTAINED FROM SOURCES WE DEEM RELIABLE. WHILE WE HAVE NO REASON TO DOUBT ITS ACCURACY WE DO NOT GUARANTEE IT.