



1326 Chorro Street

Property Description:

City:	San Luis Obispo, CA
Size:	225 - 1,871 SF
Price:	\$1,100 - \$4,025/Month, Gross (Utilities & WIFI included)
Type:	Office
Notes:	Stunning mid-century building with three offices, reception, and conference room, restroom, balcony, storage, and parking. Close to downtown.

MELANIE SENN

805.543.1400
798 PALM ST, SLO, CA 93401
www.Anderson-Senn.com
DRE #02231763

ANDERSON & SENN

COMMERCIAL REAL ESTATE

1326 CHORRO



MELANIE SENN

805.543.1400
798 PALM ST, SLO, CA 93401
www.Anderson-Senn.com
DRE #02231763

INFORMATION CONTAINED HEREIN HAS BEEN OBTAINED FROM SOURCES WE DEEM RELIABLE. WHILE WE HAVE NO REASON TO DOUBT ITS ACCURACY WE DO NOT GUARANTEE IT.

ANDERSON & SENN

COMMERCIAL REAL ESTATE

1326 CHORRO



MELANIE SENN

805.543.1400
798 PALM ST, SLO, CA 93401
www.Anderson-Senn.com
DRE #02231763

INFORMATION CONTAINED HEREIN HAS BEEN OBTAINED FROM SOURCES WE DEEM RELIABLE. WHILE WE HAVE NO REASON TO DOUBT ITS ACCURACY WE DO NOT GUARANTEE IT.



Entry Level

MELANIE SENN

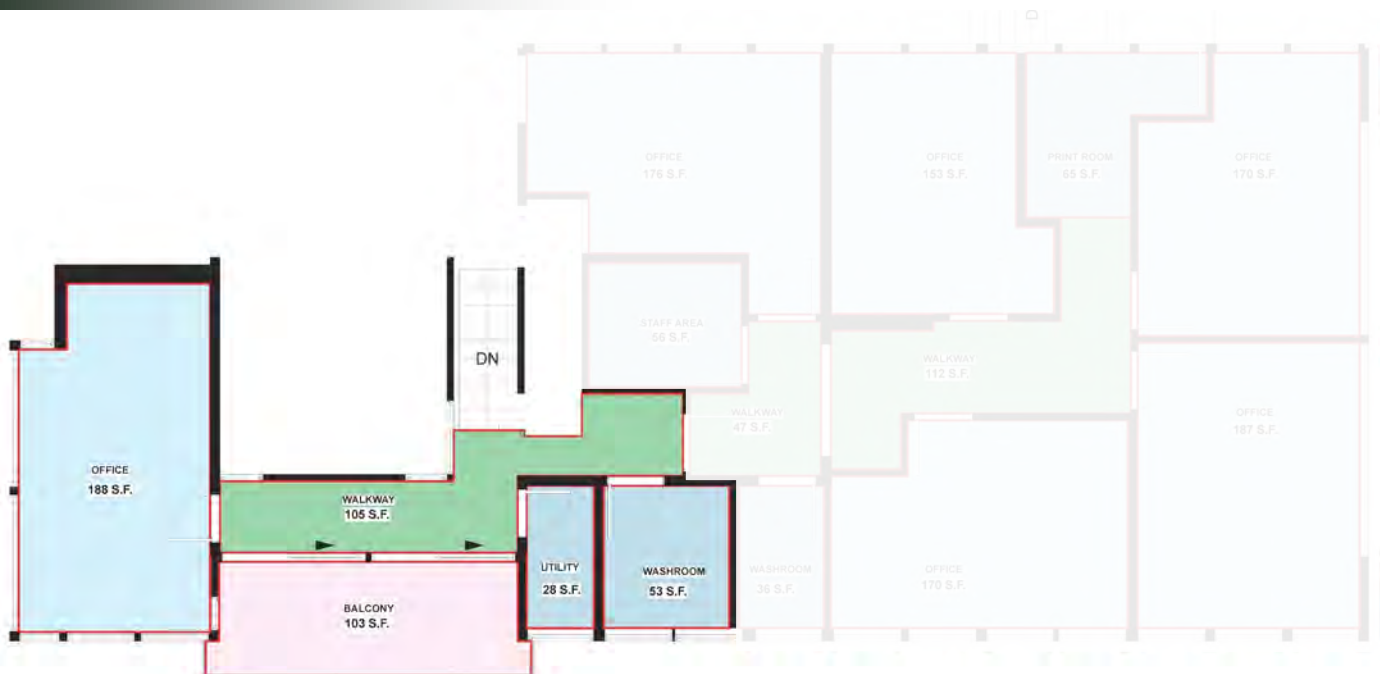
805.543.1400
798 PALM ST, SLO, CA 93401
www.Anderson-Senn.com
DRE #02231763



First Floor

MELANIE SENN

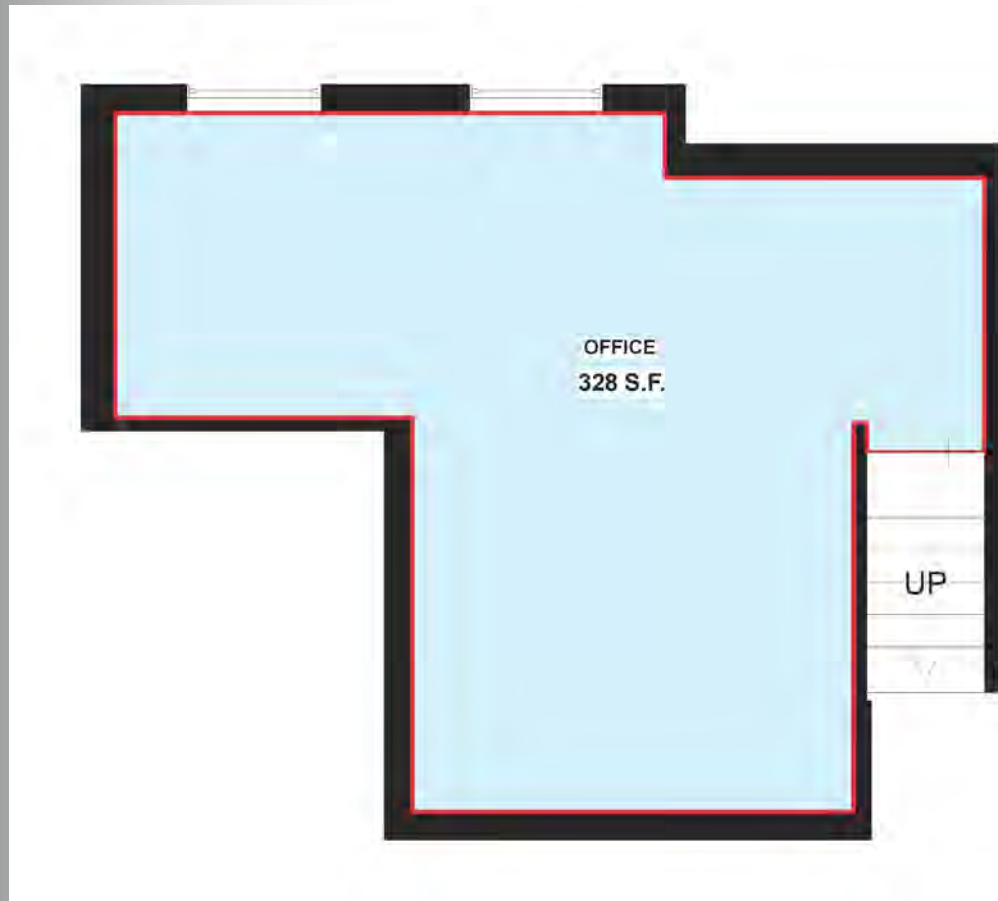
805.543.1400
798 PALM ST, SLO, CA 93401
www.Anderson-Senn.com
DRE #02231763



Second Floor

MELANIE SENN

805.543.1400
798 PALM ST, SLO, CA 93401
www.Anderson-Senn.com
DRE #02231763



Bottom Level

MELANIE SENN

805.543.1400
798 PALM ST, SLO, CA 93401
www.Anderson-Senn.com
DRE #02231763

ANDERSON & SENN

COMMERCIAL REAL ESTATE

1326 CHORRO



MELANIE SENN

805.543.1400
798 PALM ST, SLO, CA 93401
www.Anderson-Senn.com
DRE #02231763

INFORMATION CONTAINED HEREIN HAS BEEN OBTAINED FROM SOURCES WE DEEM RELIABLE. WHILE WE HAVE NO REASON TO DOUBT ITS ACCURACY WE DO NOT GUARANTEE IT.