



1457 Marsh Street, Suite 200

Property Description:

City: San Luis Obispo, CA

Size: 1,250 Square Feet

Price: \$1.95/Square Foot

Type: Office

Notes: This office space provides unique work environment surrounded by nature. This cozy office suite, situated in a tranquil park-like setting, offers a refreshing alternative to the typical corporate office. The building is nestled among mature trees and is bordered by a picturesque creek. Step outside to enjoy the fresh air and take advantage of the private outdoor seating areas, perfect for casual meetings. The office suite is move-in ready, includes 3 private offices and features large windows that offer scenic views of the surrounding greenery. Parking is in common

**DEREK SENN
MARK ANDERSON**

805.543.1400
798 PALM ST, SLO, CA 93401
www.Anderson-Senn.com
DRE #001252131

ANDERSON & SENN

COMMERCIAL REAL ESTATE

1457 MARSH



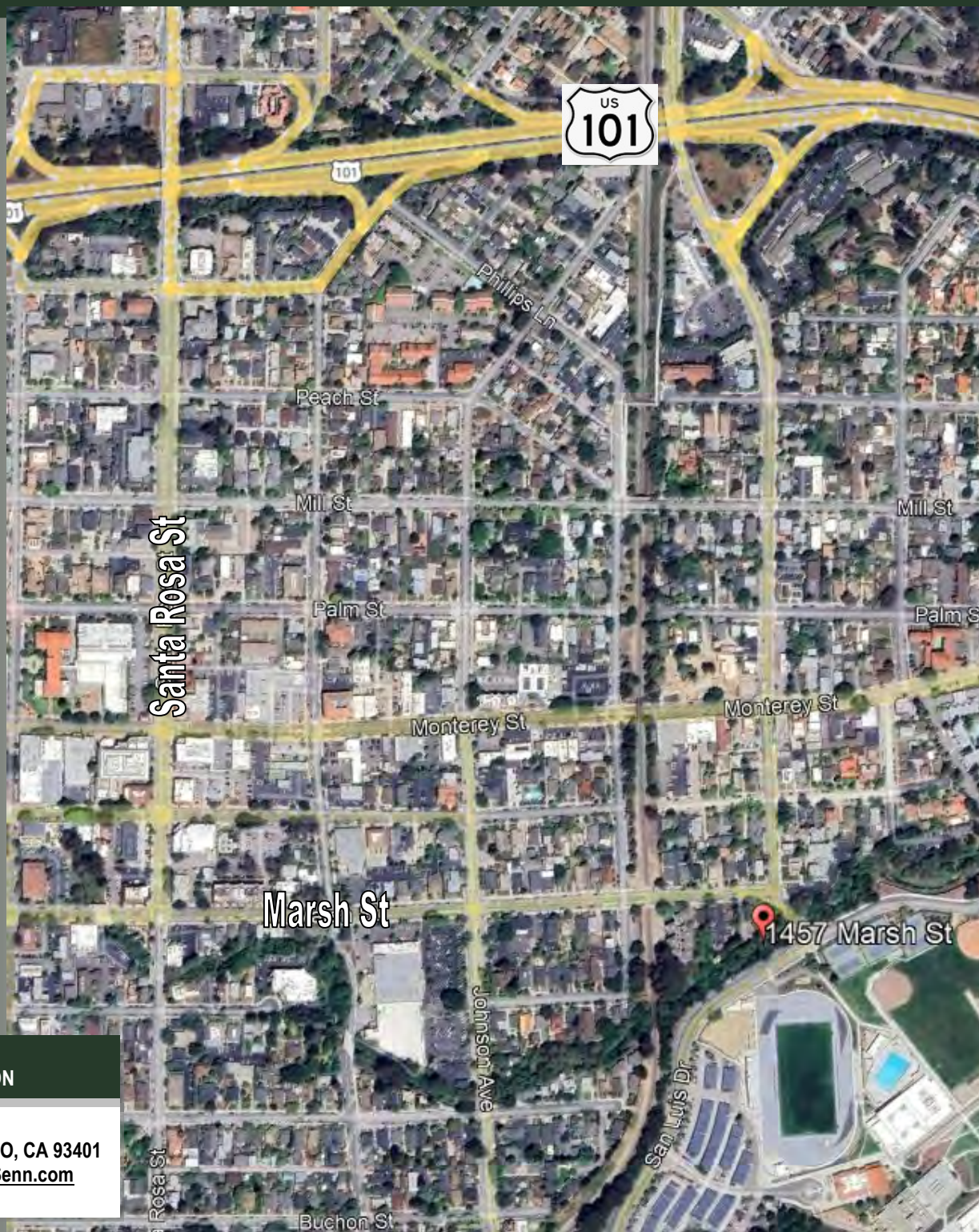
DEREK SENN
MARK ANDERSON

805.543.1400
798 PALM ST, SLO, CA 93401
www.Anderson-Senn.com
DRE #001252131

ANDERSON & SENN

COMMERCIAL REAL ESTATE

1457 MARSH



DEREK SENN
MARK ANDERSON

805.543.1400
798 PALM ST, SLO, CA 93401
www.Anderson-Senn.com
DRE #001252131

INFORMATION CONTAINED HEREIN HAS BEEN OBTAINED FROM SOURCES WE DEEM RELIABLE. WHILE WE HAVE NO REASON TO DOUBT ITS ACCURACY WE DO NOT GUARANTEE IT.