



## 1326 Chorro Street, Lower Level Office

### Property Description:

City: San Luis Obispo, CA

Size: 328 Square Feet

Price: \$1,300/Month, Gross

Type: Office

Notes: Spacious lower-level office available in a stunning mid-century freestanding office building in the heart of downtown San Luis Obispo. Very private space with transom windows. Shared conference room, restroom, potential storage, and on-site parking. All utilities (plus Wi-Fi) included.

**MELANIE SENN**

805.543.1400  
798 PALM ST, SLO, CA 93401  
[www.Anderson-Senn.com](http://www.Anderson-Senn.com)  
DRE #02231763



# ANDERSON & SENN

COMMERCIAL REAL ESTATE

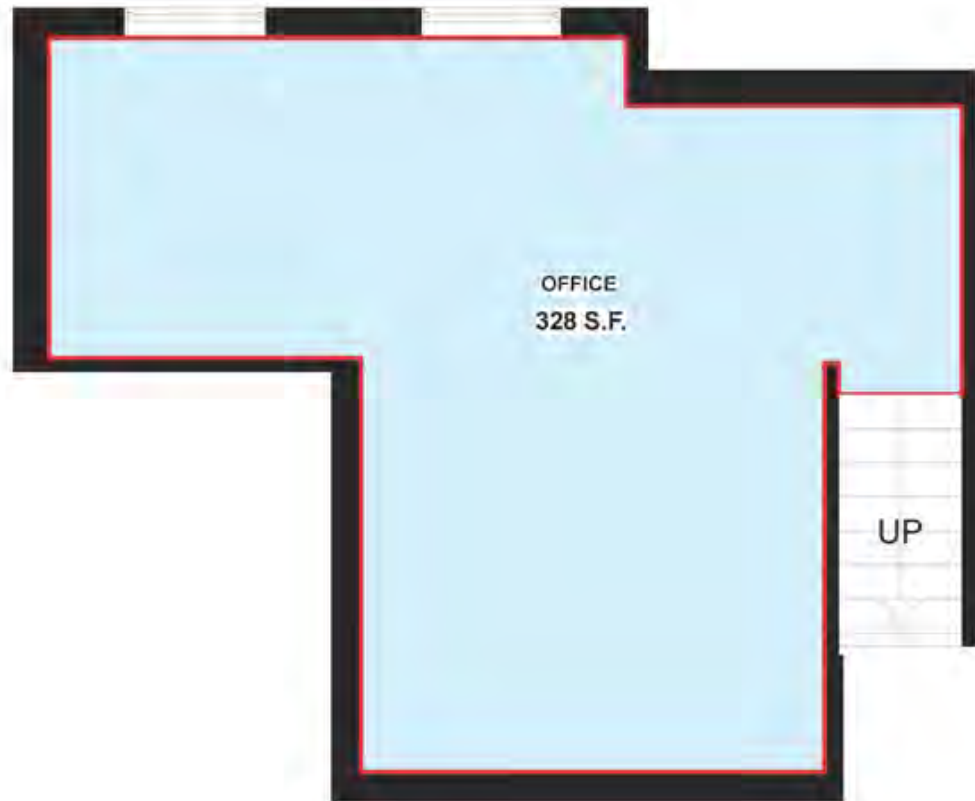
1326 CHORRO,  
328 SF OFFICE



MELANIE SENN

805.543.1400  
798 PALM ST, SLO, CA 93401  
[www.Anderson-Senn.com](http://www.Anderson-Senn.com)  
DRE #02231763

INFORMATION CONTAINED HEREIN HAS BEEN OBTAINED FROM SOURCES WE DEEM RELIABLE. WHILE WE HAVE NO REASON TO DOUBT ITS ACCURACY WE DO NOT GUARANTEE IT.



1 LOWER LEVEL FLOOR PLAN  
Scale: 1/4" = 1'-0"

**MELANIE SENN**

805.543.1400  
798 PALM ST, SLO, CA 93401  
[www.Anderson-Senn.com](http://www.Anderson-Senn.com)  
DRE #02231763



# ANDERSON & SENN

COMMERCIAL REAL ESTATE

**1326 CHORRO,  
328 SF OFFICE**



**MELANIE SENN**

805.543.1400  
798 PALM ST, SLO, CA 93401  
[www.Anderson-Senn.com](http://www.Anderson-Senn.com)  
DRE #02231763

INFORMATION CONTAINED HEREIN HAS BEEN OBTAINED FROM SOURCES WE DEEM RELIABLE. WHILE WE HAVE NO REASON TO DOUBT ITS ACCURACY WE DO NOT GUARANTEE IT.