



1250 Peach Street, Suite C

Property Description:

City: San Luis Obispo, CA

Size: 930 Square Feet

Price: \$2,250/Month, Gross

Type: Office

Notes: This handsomely remodeled suite features a reception area; a kitchenette and bathroom; a deck with views of San Luis Mountain; and two offices with separate entrances. The suite is located in a peaceful neighborhood in the coveted Fremont Medical Center, with its beautiful trees and lush landscaping. Conveniently near freeway access and downtown, the stylish and professional suite has ample parking. A must-see.

MELANIE SENN

805.543.1400
798 PALM ST, SLO, CA 93401
www.Anderson-Senn.com
DRE #02231763

ANDERSON & SENN

COMMERCIAL REAL ESTATE

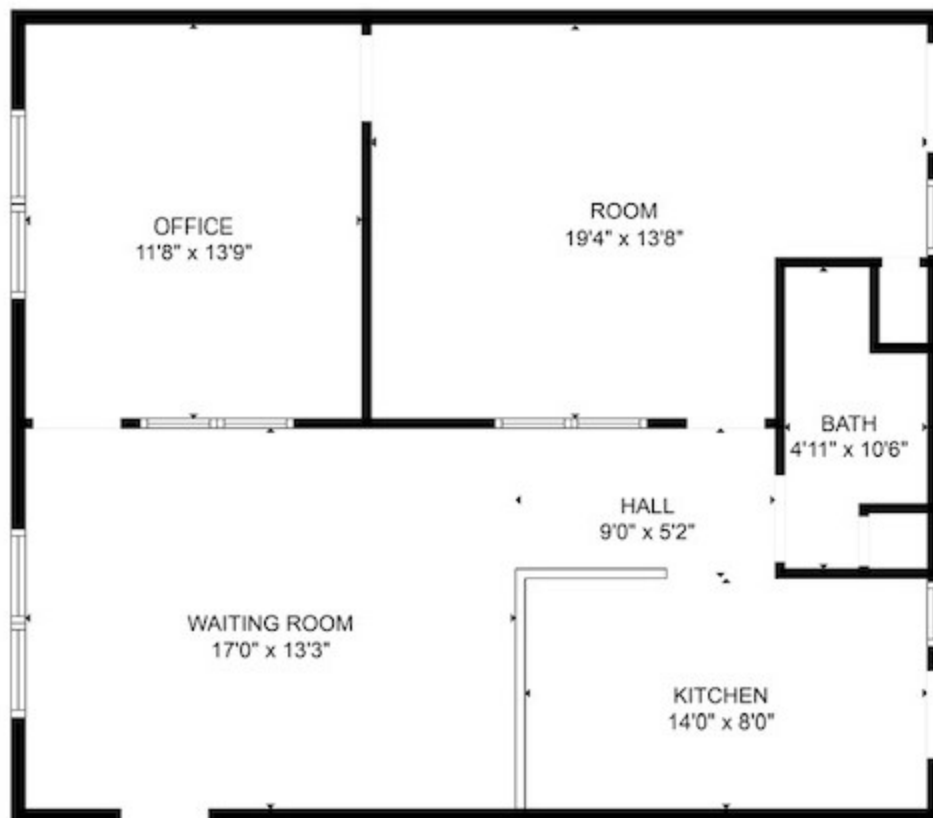
1250 PEACH #C



MELANIE SENN

805.543.1400
798 PALM ST, SLO, CA 93401
www.Anderson-Senn.com
DRE #02231763

INFORMATION CONTAINED HEREIN HAS BEEN OBTAINED FROM SOURCES WE DEEM RELIABLE. WHILE WE HAVE NO REASON TO DOUBT ITS ACCURACY WE DO NOT GUARANTEE IT.



FLOOR PLAN CREATED BY CUBICASA APP. MEASUREMENTS DEEMED HIGHLY RELIABLE BUT NOT GUARANTEED.

Floor Plan

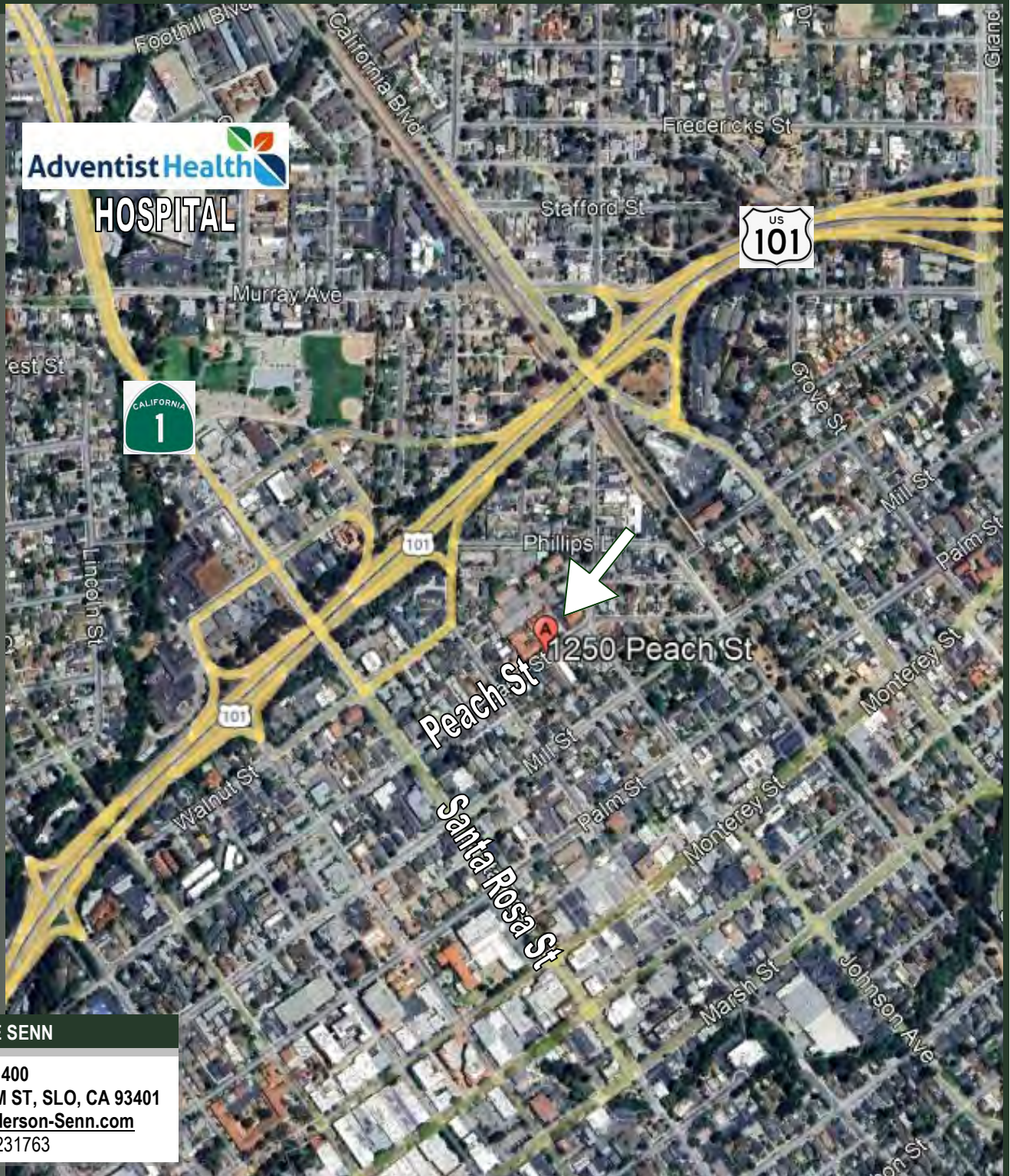
MELANIE SENN

805.543.1400
798 PALM ST, SLO, CA 93401
www.Anderson-Senn.com
DRE #02231763

ANDERSON & SENN

COMMERCIAL REAL ESTATE

1250 PEACH #C



MELANIE SENN

805.543.1400
798 PALM ST, SLO, CA 93401
www.Anderson-Senn.com
DRE #02231763

INFORMATION CONTAINED HEREIN HAS BEEN OBTAINED FROM SOURCES WE DEEM RELIABLE. WHILE WE HAVE NO REASON TO DOUBT ITS ACCURACY WE DO NOT GUARANTEE IT.