



81 Higuera Street, Suite 280

Property Description:

City: San Luis Obispo, CA

Size: 2,601 Square Feet

Price: \$1.90/Square Foot, Gross

Type: Office

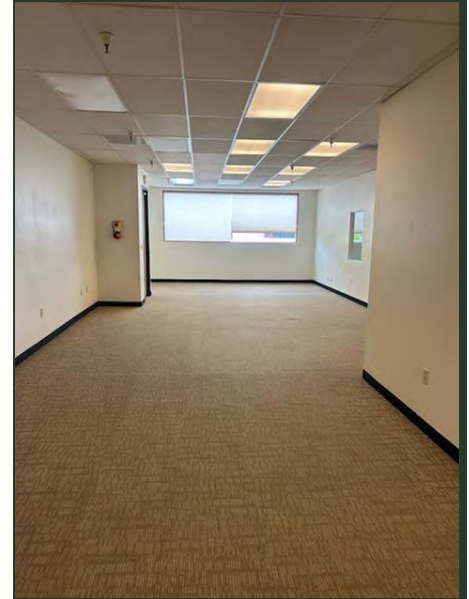
Notes: An elevator served second floor office suite consisting of three private offices, a conference room, and two large open work areas. There is a break room kitchenette as well. The Pacific Coast Center is a centrally located commercial center at the intersection of Madonna Road & S. Higuera Street.

DEREK SENN

805.543.1400
798 PALM ST, SLO, CA 93401
www.Anderson-Senn.com
DRE #001252131

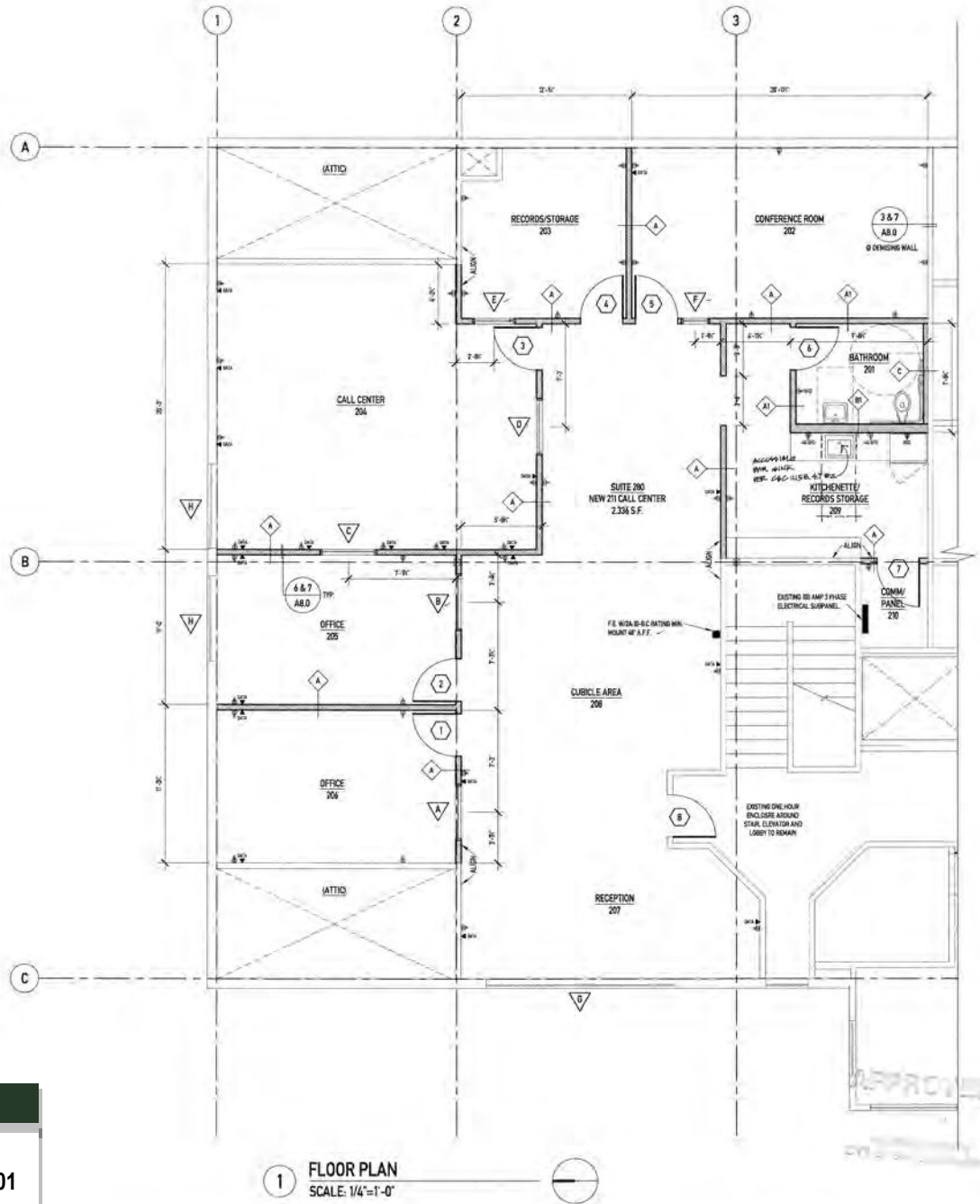
ANDERSON & SENN
COMMERCIAL REAL ESTATE

**81 HIGUERA
#280**



DEREK SENN

805.543.1400
798 PALM ST, SLO, CA 93401
www.Anderson-Senn.com
DRE #001252131



DEREK SENN

805.543.1400
798 PALM ST, SLO, CA 93401
www.Anderson-Senn.com
DRE #001252131